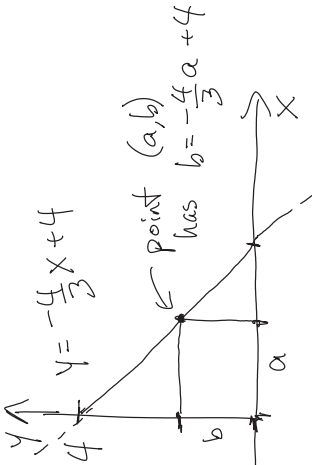


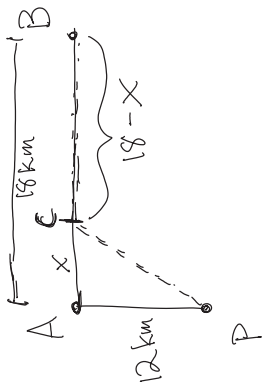
Word Problem Diagrams

Friday, June 03, 2011
15:05

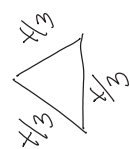
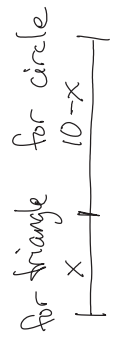
①



②

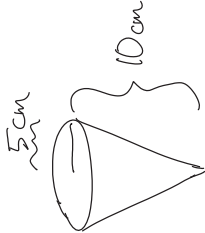


③

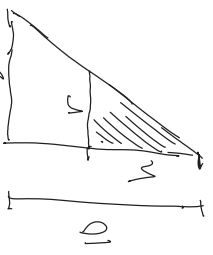


perimeter
2πr = 10 - x

⑤

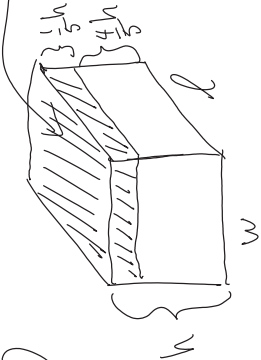


from the side;



similar Δs:
 $\frac{r}{h} = \frac{5}{10}$

⑥



lid overlaps side

$l = \frac{5w}{3}$

total volume = 3000 cm³

$V = hlw$